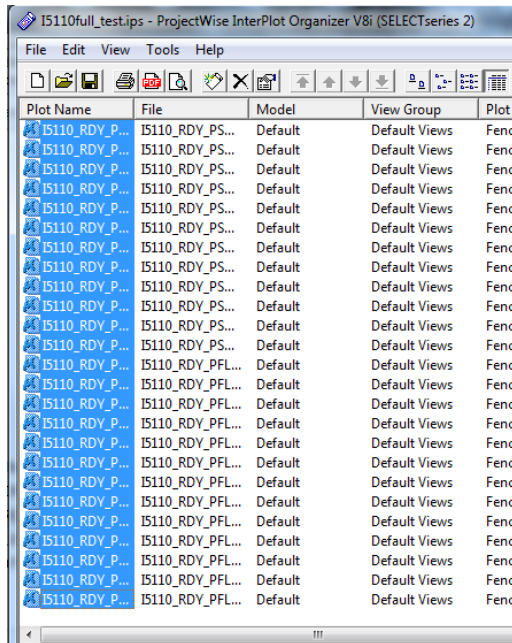


## 17\_09 Iplot Organizer IPS with Win7

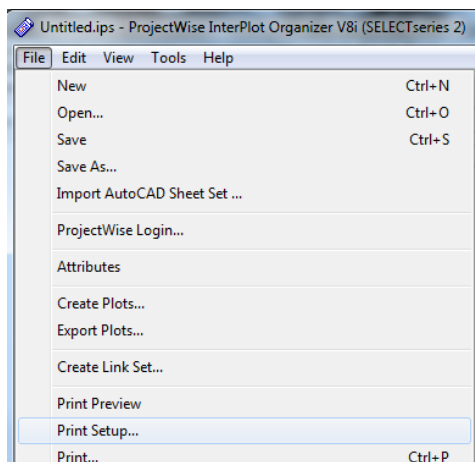
First run the VBS script to automatically attach your group's printers found in your project folder on the S:\ drive. For example, mine would be "rd06\_Printers\_Win7.vbs" found under S:\RD06-Haire. Yours will be different depending on your PE Group. If you do not performed the above procedure, Snagit10 (not a physical printer) will be your default printer for everything, including iPlot Organizer HS and FS plots.

For **FULL SIZE** plots

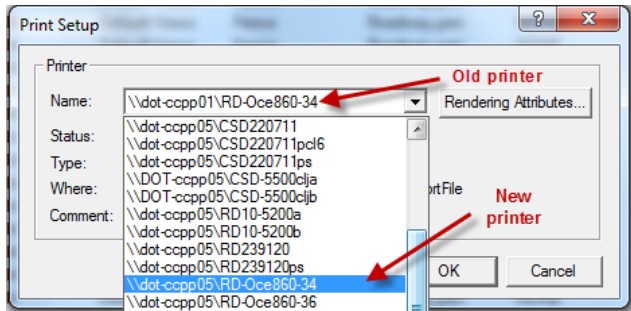
When printing full size plots with iPlot Organizer IPS files change to the new printer by first selecting all the plots in the IPS.



Then go to File -> Print Setup.



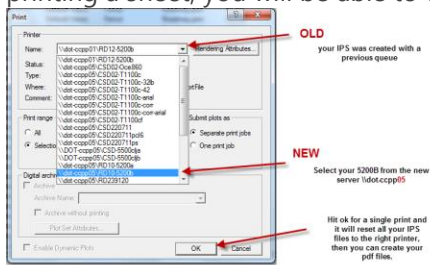
Then change to the printer [\\dot-ccpp05\RD-Oce860-34](#).



### Resave the IPS.

For **HALF SIZE** plots

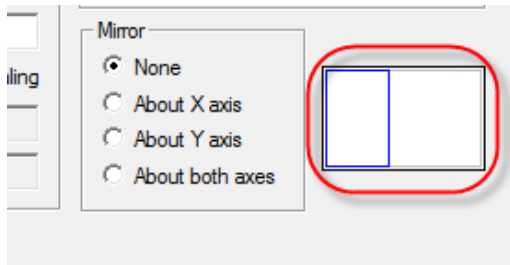
When printing half size plots with iPlot Organizer IPS files change to the new printer by selecting File -> Print Setup. If the Print Setup dialog box does not open, you must first print to the new printer. Before printing a sheet, you will be able to choose the new printer. **Resave the IPS.**



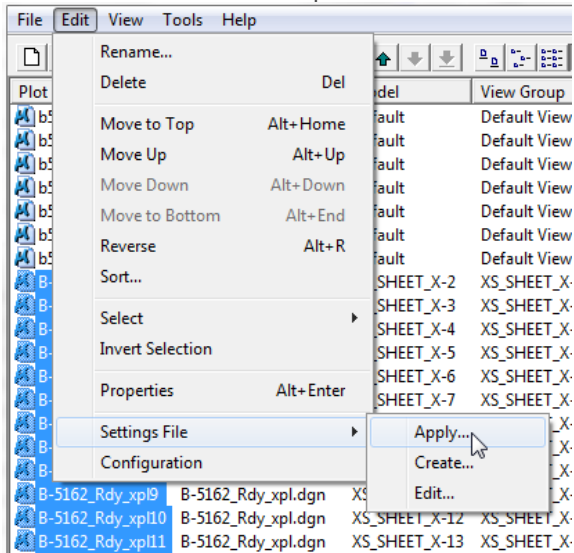
Sometime the scale or sheet orientation is thrown off on HS prints when changing printers. Evaluate the Scale, (sheet) Size, and Rotation to see if they are correct.

Scale	Size	Origin	Rotation	Mirror
149.557:1	16.4887, 10.5567	0, 0	180	off
150:1	16.665, 10.551	0, 0	180	off
100:1	16.665, 10.551	0, 0	180	off
100:1	16.665, 10.551	0, 0	180	off
100:1	16.6599, 10.5499	0, 0	180	off
100:1	16.6599, 10.5499	0, 0	180	off
100:1	16.6599, 10.5499	0, 0	180	off
100:1	16.665, 10.551	0, 0	180	off
15.1638:1	6.95734, 10.9867	0, 0	90	off
15.1638:1	6.95734, 10.9867	0, 0	90	off
15.1638:1	6.95734, 10.9867	0, 0	90	off
15.1638:1	6.95734, 10.9867	0, 0	90	off
15.1638:1	6.95734, 10.9867	0, 0	90	off
15.1638:1	6.95734, 10.9867	0, 0	90	off
15.1638:1	6.95734, 10.9867	0, 0	90	off
15.1638:1	6.95734, 10.9867	0, 0	90	off

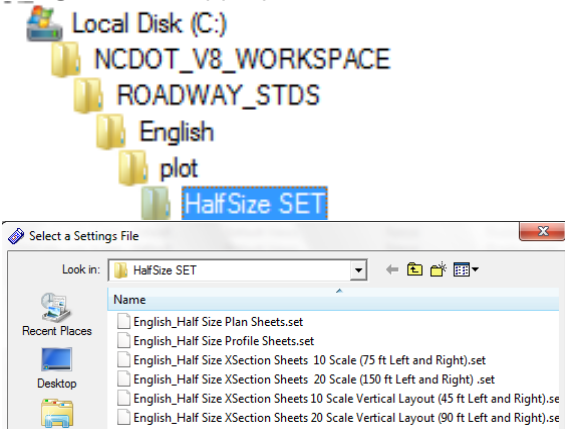
Also looking at the print area (blue rectangle) compared to the sheet under print properties helps .



To fix this issue, select the plot files and then Edit -> Setting Files -> Apply.



Navigate to the appropriate SET file found in the Roadway Workspace and select it.



Scale	Size	Origin	Rotation	Mirror
149.557:1	16.4887, 10.5567	0, 0	180	off
150:1	16.665, 10.551	0, 0	180	off
100:1	16.665, 10.551	0, 0	180	off
100:1	16.665, 10.551	0, 0	180	off
100:1	16.6599, 10.5499	0, 0	180	off
100:1	16.6599, 10.5499	0, 0	180	off
100:1	16.665, 10.551	0, 0	180	off
10:1	16.66, 10.55	0, 0	180	off
10:1	16.66, 10.55	0, 0	180	off
10:1	16.66, 10.55	0, 0	180	off
10:1	16.66, 10.55	0, 0	180	off
10:1	16.66, 10.55	0, 0	180	off
10:1	16.66, 10.55	0, 0	180	off
10:1	16.66, 10.55	0, 0	180	off
10:1	16.66, 10.55	0, 0	180	off

Applying settings file to B-5162\_Rdy\_xpl  
 NOSUCHMODEL, the model "XS\_SHEET\*" does not exist  
 Applying settings file to B-5162\_Rdy\_xpl1  
 NOSUCHMODEL, the model "XS\_SHEET\*" does not exist  
 Applying settings file to B-5162\_Rdy\_xpl2  
 NOSUCHMODEL, the model "XS\_SHEET\*" does not exist  
 Applying settings file to B-5162\_Rdy\_xpl3  
 NOSUCHMODEL, the model "XS\_SHEET\*" does not exist  
 Applying settings file to B-5162\_Rdy\_xpl4

